

PETER R. SUMMERLIN

ASLA, LEED AP
Assistant Professor, Mississippi State University

(601) 260-5200
p.summerlin@msstate.edu
www.petersummerlin.wordpress.com

EDUCATION

- 2012 **Louisiana State University - Baton Rouge, LA**
MLA, Master of Landscape Architecture
4.0 GPA - Dean's Medal
- 2006 **Mississippi State University - Mississippi State, MS**
BLA, Bachelor of Landscape Architecture
3.95 GPA - Summa Cum Laude

ACADEMIC APPOINTMENTS

- 2014 - Present **Assistant Professor**
Mississippi State University – Starkville, MS
Courses Taught:
- LA 1223 – Computers in Landscape Architecture
 - LA 2544 – Construction 1: Materials
 - LA 2644 – Construction 2: Grading (Guest Lecturer)
 - LA 4443 – Exterior Design/Build
 - LA 4754 – Design Studio 5: Regional Design
 - LA 8545 – LA Studio 4: Case Study
 - LA 8751 – LA Seminar 4: Contemporary Design Issues
- 2012-2014 **Adjunct Professor, Professional in Residence**
Louisiana State University – Baton Rouge, LA
Courses Taught:
- LA 1102 – Landscape Representation II
 - LA 2101 – Advanced Digital Representation
 - LA 2301 – Landscape Technology 1, Land Design
 - LA 3301 – Landscape Technology 2, Grading and Drainage
 - LA 3302 – Landscape Technology 3, Design Detailing
 - LA 4301 – Landscape Technology 4, Special Topics in Technology
 - LA 5301 – Landscape Architecture Professional Practice
- 2011-2012 **Graduate Teaching Assistant, Instructor of Record**
Louisiana State University – Baton Rouge, LA
Courses Taught:
- LA 1102 – Landscape Representation II
 - LA 2101 – Advanced Digital Representation
- 2010-2011 **Graduate Research Assistant**
Communication Across the Curriculum, LSU (Baton Rouge, LA)
Jacmel Haiti Urban Recovery Project, Prof. Austin Allen, LSU (Baton Rouge, LA)

PROFESSIONAL EXPERIENCE

2012-2013 Associate

Dana Brown & Associates, Inc. (Baton Rouge, LA)

Selected Projects

- Iberville Parish Land Use and Development Code, Iberville, LA
- City of Hammond Contract Planner: Hammond, LA
- Destrehan Plantation Master Development Plan, Destrehan, LA
- Desmare Playground, New Orleans, LA
- Lane Regional Medical Center Landscape Improvements, Zachary, LA
- Progress Elementary School, Baton Rouge, LA
- North Boulevard Town Square, Baton Rouge, LA
- The New Woman's Hospital, Baton Rouge, LA
- "Living with Water: Greater New Orleans Urban Water Plan" for the Greater New Orleans Development Foundation, New Orleans, LA

2011 Landscape Intern

Brown+Danos landDESIGN - Baton Rouge, LA

Selected Projects

- 5 Community Improvement Plans: East Baton Rouge Redevelopment Authority, Baton Rouge, LA
- Morganfield Residential Development, Lake Charles Louisiana
- North Boulevard Town Square, Baton Rouge, LA

2007-2010 Design Associate

McCroy & Associates, LLC - Madison, MS

Selected Projects

- Reunion Residential Development Master Plan, Madison, MS
- City of Madison, Safe Routes to School, Madison, MS
- Fountains of Madison Commercial Development, Madison, MS
- Holmes Community College Master Planning, Ridgeland, MS
- Pinelake Church, Madison Campus Site Plan, Madison, MS
- Reunion Parkway Commercial Corridor Study, Madison, MS
- Bertolet Residence, Ridgeland, MS
- Croswell Residence, Ridgeland, MS
- Noble Residence, Madison, MS
- Annabella Residential Development, Starkville, MS
- Avonlea Residential Development, Madison, MS
- Charlton Place Residential Development, Madison County, MS

2006-2007 Assistant Planner

City of Madison – Madison, MS

Selected Projects

- Safe Routes to School Grant Funding
- Interstate 55, Highway 463 Interchange Landscape Grant Funding
- Landscape and Stormwater Ordinance Revisions
- Madison Square
- Liberty Park South
- Bike and Pedestrian Circulation Plan

- 2002-2005 Landscape Intern
Volkert & Associates, Inc. – Foley, AL
Selected Projects
- Foley Wetland Park, Foley, AL
 - Town Creek Park, Auburn, AL
 - Sunset Bay Residential Development, Gulf Shores, AL
 - Foley Hike and Bike Trail, Foley, AL

PROFESSIONAL AFFILIATIONS

- 2012-2014 Baton Rouge Downtown Development District
2012-2014 American Planning Association, Louisiana Chapter
2009-2010 Center for Sustainable Engagement Volunteer
2009 LEED Accredited Professional
2009 Mississippi Department of Transportation, LPA and Consultant Training Seminar
2007 Central Mississippi Planning and Development District, GIS Training Course
2006-2010 City of Madison, Safe Routes to School Commission
2006 - Present American Society of Landscape Architects member
Present Working towards licensure through CLARB (passed 3 of 4)

AWARDS & DISTINCTIONS

- 2015 Faculty Advisor for "Harrison Creek Restoration" by Kenny Jones and Travis Crabtree,
Winner of and ASLA Award of Merit by the Mississippi Chapter of the ASLA
- 2012 Dean's Medal, Robert Reich School of Landscape Architecture
Best Graduate Thesis Project Award, Robert Reich School of Landscape Architecture
Teaching Award, Robert Reich School of Landscape Architecture
Academic Achievement Award, Robert Reich School of Landscape Architecture
3rd Year MLA Leadership Award, Robert Reich School of Landscape Architecture
Graduate Studio Design Award, Robert Reich School of Landscape Architecture
Natural Systems/Environmental Award, Robert Reich School of Landscape Architecture
RRSLA Graduate Student Representative, Louisiana State University
Certificate of Merit for Excellence in the Study of Landscape Architecture, Louisiana
State University
Member of the "Edible Schoolyard" Project Team that was awarded an ASLA Merit
Award by the Louisiana Chapter of the American Society of Landscape Architects
- 2011 Member of the "Turbulent Coast" Project Team that was awarded an ASLA Merit Award
by the Louisiana Chapter of the American Society of Landscape Architects
Helen A Reich Memorial Scholarship, Robert Reich School of Landscape Architecture,
Louisiana State University
- 2006 National ASLA Certificate of Honor for Magnolia River Ranch
Certificate of Honor for Excellence in the Study of Landscape Architecture, Mississippi
State University
- 2005 Certificate of Honor for Excellence in the Study of Landscape Architecture, Mississippi
State University

2003 Page Design and Theme Development Awards (4) from the Alabama Scholastic Press Association

SCHOLARSHIP

Conference Presentations (Selected):

- 2015 Summerlin, Peter and Vincent Cellucci. *Visualizing Contours: Integrating 3D Scanning into the Design Workflow*. Council of Educators in Landscape Architecture, Kansas State University, KS. March 2015
- 2015 Hwangbo, Elizabeth and Peter Summerlin. *The Exploration of Vue as a tool for Digital Representation in Landscape Architecture*. Council of Educators in Landscape Architecture, Kansas State University, KS. March 2015
- 2015 Seymour, Michael and Peter Summerlin. *Data or Art? A Proposed Method for Analysis of Historic Landscape Photos*. Council of Educators in Landscape Architecture, Kansas State University, KS. March 2015
- 2015 Summerlin, Peter. *Visualizing Contours for the Beginning Design Student*, National Conference on the Beginning Design Student, University of Houston, TX. February 2015
- 2012 Summerlin, Peter, Lucas Frey, and Bradley Cantrell. *Envisioning Information: How Contemporary Visualization Techniques Can Reshape the Way We Explore Plant Data*, Council of Educators in Landscape Architecture, University of Illinois Urbana-Champaign, March 2012
- 2005 Walker, Jason, Robert Brzuszek, and Peter Summerlin. *The Wildland-Urban Interface: Where Economic Development and Cultural Influences are Impacting Sense of Place*. Council of Educators in Landscape Architecture, University of Georgia, Athens, GA 2005

BACKGROUND / WORKSTATION

3-D PRINTING TERRAIN MODELS

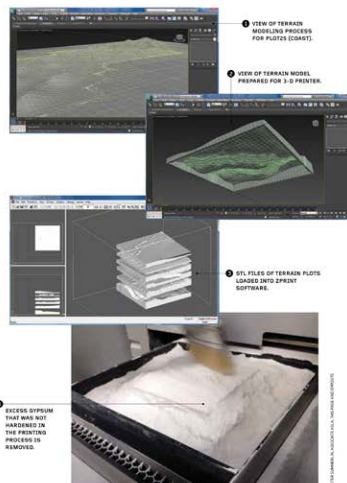
In a studio at Louisiana State University led by Peter Summerlin, Associate ASLA, students used 3-D printing to make digital terrain models representing five different landscape types (upland forest, prairie, urban, marsh, coast). The students examined terrain characteristics of each type and learned ways to model terrain using job files by Autodesk.

STEP 1 Across a 25-plot regional landscape, each student digitally modeled one terrain plot. The students learned together to develop cohesive transitions among the landscape types.

STEP 2 Each terrain plot was scaled to a five-inch-square model and often hollowed out underneath to save printing materials and costs. The file was exported as a standard Universal Document Language, or STL file, which can be read by the typical 3-D printer.

STEP 3 Groups of five to eight students loaded their digital terrain model into software called ZPrint for printing on a ZCorp 3-D printer located in the LSU Design Shop. The printer layers sheets of a gypsum-like material. The sheets are then hardened with a liquid fluid applied by an ultraviolet light. The printhead narrows only areas defined by the STL files. Excess gypsum is then reused for later prints.

STEP 4 The 3-D printer has a build size of up to 8 by 10 by 6 inches, allowing students to print several plots at once. The printing process generally takes four hours for eight models. When printing is completed, excess gypsum not hardened by the printhead is recycled in the printer for later use. All 25 models were modeled as the analog representation of the digital terrain produced at the start of the project.



62 / LANDSCAPE ARCHITECTURE MAGAZINE FALL 2014

LANDSCAPE ARCHITECTURE MAGAZINE FALL 2014 / 63

2014 Teaching work, Photographs, and Quotations featured in Landscape Architecture Magazine. March, 2014

Publications (Selected):

- 2015 Summerlin, Peter. *Visualizing Contours for the Beginning Design Student*, National Conference on the Beginning Design Student, Conference Proceedings
- 2014 Pacyga, John. *3-D Printing: The Basics (For Now)*. *Physical Models Made Easier* Landscape Architecture Magazine. March, 2014.
Teaching work, Photographs, and Quotations featured in Article
- 2014 MacMillan. *GeoWorld 7 Australian Curriculum edition*. MacMillan Education, 2014.
Water Salinity Diagram featured in Textbook
- 2014 Cantrell, Bradley. and Wes Michaels. *Digital Representation in Landscape Architecture, 2nd Edition*. Wiley & Sons. 2014.
Author to Chapter 9. Written and Graphic Contributions to all Chapters in Part 4
- 2014 Brown, Dana Nunez. *Using Plants for Stormwater Management: A Green Infrastructure Guide for the Gulf South*. Louisiana State University Press. April 2014.
Contributing Editor for Plant Data
- 2011 Summerlin, Peter and Bruce Sharky. *Giving Back: A Guide for Adaptive Reuse of Borrow Sites in Jefferson, Orleans, Plaquemines, and St. Bernard Parish*. Louisiana Department of Wildlife and Fisheries and SeaGrant. 2011
- 2011 Summerlin, Frey, Petty, Bai, Jiang, Williston, McNab, Jacobson, Li, Tian, and Guan. *Turbulent Coast: Analysis and Design for a Changing Environment*, Louisiana State University COAD. 2011.
- 2011 Summerlin, Peter and Kyle Jacobson. *What's Out There?* Cultural Landscape Foundation. 2012.
Contributing Author and Photographer for the Following Projects
- New Orleans Botanical Gardens
 - City Park
 - Audubon Park
 - Audubon Zoo
 - Dillard University
- 2006 Thompson, J. William. *2006 ASLA Student Award Winners: A Global Perspective*. Landscape Architecture Magazine, September 2006.
Student Work featured in Article

Invited Lectures (Selected):

- 2015 "Design for the Future" Summerlin, Peter. National Garden Clubs, Inc. Landscape Design School. Louisville, MS. April 2015
- 2015 "Integrating Software: How and when should you use certain software in the design process?" Summerlin, Peter. Student Chapter of the American Society of Landscape Architects, Mississippi State University. April 2015
- 2013 "Staging Transformation" Summerlin, Peter. Robert Reich School of Landscape Architecture LA 7102, Graduate Landscape Tools 2
- 2012 "Water Management Issues in Southeast Louisiana" Summerlin, Peter. Robert Reich School of Landscape Architecture LA 7003 Design Studio

2012 "Hybrid Drafting: Utilizing Analog and Digital Skills in the Design Process", Summerlin, Peter, Louisiana State University

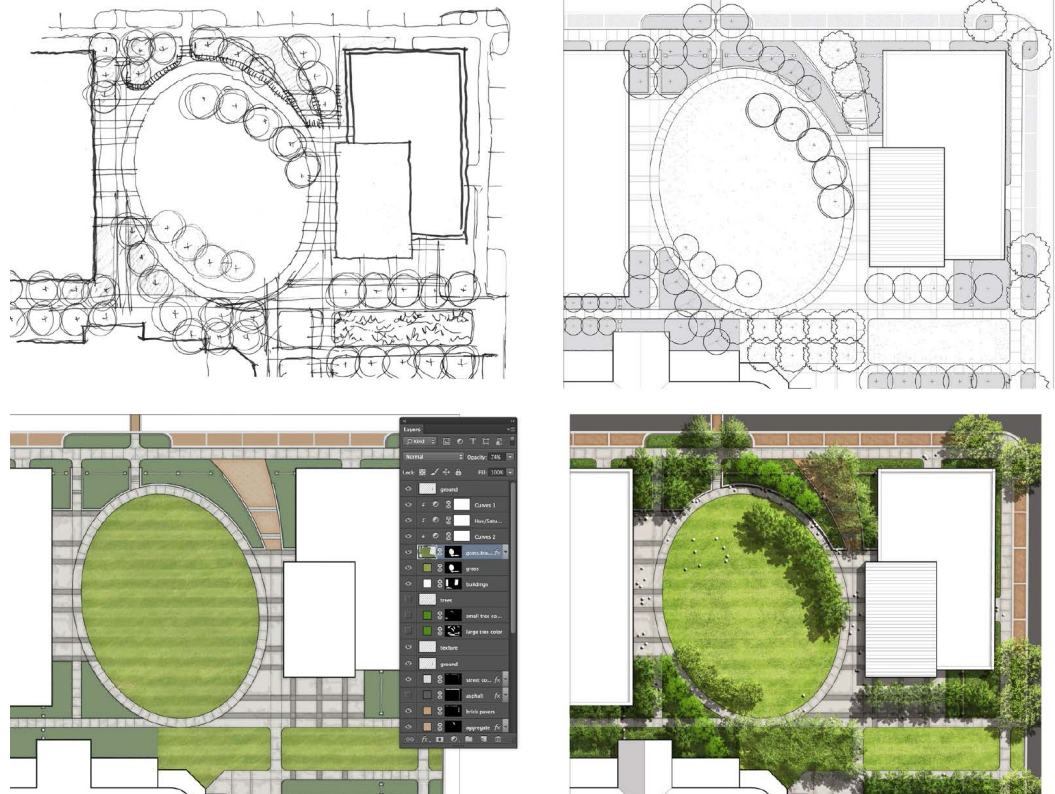
SERVICE

Professional Service Activities:

2015 QEP Faculty Focus Group, Integration of Writing in Student Learning, April 2015
2009-2010 Mississippi Chapter of ASLA, Treasurer
2008-2009 Mississippi Chapter of ASLA, Secretary

Academic Guest Critiques (Selected):

2015 LA 3654 LA Design 4: Urban Design, Chuo Li
2014 ARCH 1002 Arch Design 2: Studio Review, Justine Holzman
LA 8000 Final Thesis Review: Sarah Zelenak
LA 7004 Graduate Landscape Design 4 Final Review
2013 LA 4008 Advanced Topic Design Studio Review, Bruce Sharky
LA 2001 Undergraduate Design Studio Review, Cathy Marshall
LA 3001 Undergraduate Design Studio Review with Michael Blier, Richard Hindle
LA 4001 Internship Portfolio Review
LA 7102 Graduate Landscape Tools, Holzman and Dykema-Cheremie
LA 7002 Graduate Landscape Design 2 Final Review, Cathy Marshall



2014 Written and Graphic Contributions in the Award-winning book, Digital Drawing for Landscape Architecture

LA 7005-3 Advanced Topics Design Studio Final Review, Bruce Sharky
LA 7005-3 Advanced Topics Design Studio Final Review, Austin Allen
LA 7003 Graduate Design Studio 3 – NOLA Water Management Strategies Review
LA 1102 Landscape Representation 1 - Urban Landform: A Narrative, Final Review
LA 2002 Undergraduate Design Studio 2 – Concept review with Gary Smith, ASLA
LA 7004 Graduate Design Studio 4 – Regional Planning Phenomena Study Review
LA 3002 Undergraduate Design Studio 3 – Analysis Mapping Presentations
LA 7002 Graduate Design Studio 2 – Desoto Park Inventory, Analysis Presentation
LA 2002 Undergraduate Design Studio 2 – Precedent and Analysis Mapping